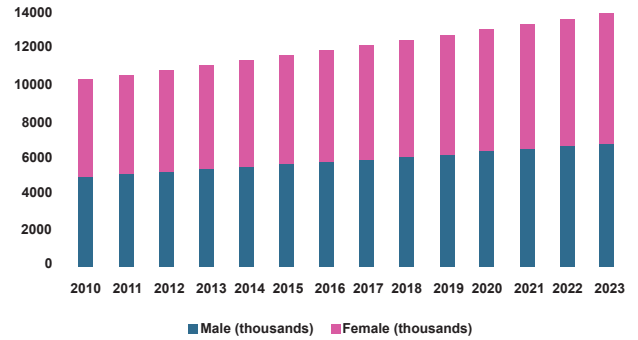


RWANDA

Women in E-Mobility




| | |
|---|---|
| Population Male (2010) 4.976,17 (thousands) | Population Female (2010) 5.341,37 (thousands) |
| Population Male (2023) 6.802,40 (thousands) | Population Female (2023) 7.152,06 (thousands) |



Registered Conventional Vehicles (2020)

12% annual growth rate **264,524** (excluding security and government vehicles)

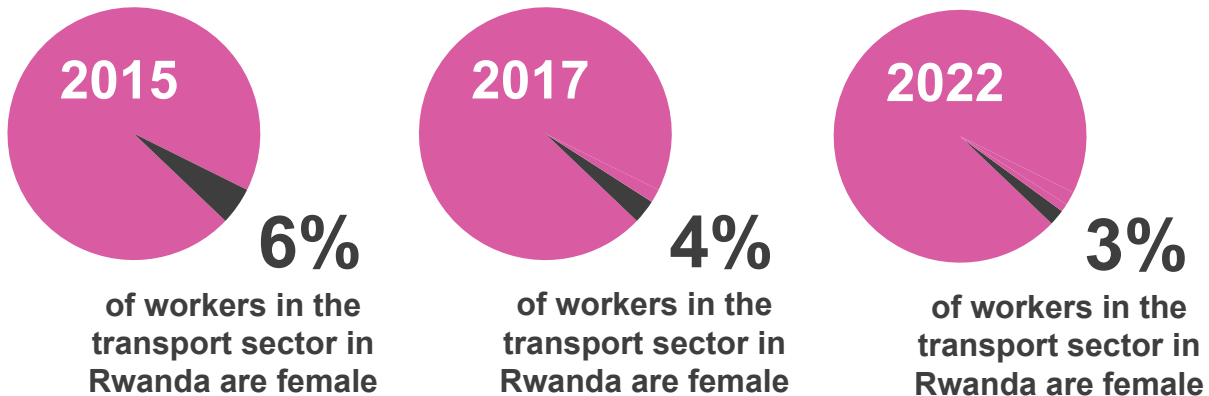
Electric Transport Initiatives in Rwanda (2021)

- Ampersand** 35 electric motorcycles 
- Safi Universal Links Ltd** 30 electric motorcycles 
- Rwanda Electric Motorcycle Company (REM)** 75 electric motorcycles 

Global Gender Gap Index (2022)

Rwanda ranks 6th out of 146 countries

Female Workers in Transport



Benefits of Introducing Electric Vehicles

50% lower maintenance costs for EVs*
*compared to conventional vehicles

17% GHG Emission reduction with EVs*
*compared to conventional vehicles